



# Circuit Board Replacement Kit

Models: B10, SpeedGleam Rider



This kit includes the necessary parts to replace a defective circuit board. Carefully follow the installation instructions as described below.

**ATTENTION: The new circuit board may require programming to complete installation. See programming instructions on page 2.**

## INSTALLATION INSTRUCTIONS:

**Installation Time:** 30 minutes

**Tools Required:** 10mm, 5/16" and 5.5mm Socket Wrench, Large and Small Philips Screwdriver.

**FOR SAFETY: Before servicing machine, stop on level surface, turn off machine, and set parking brake if equipped.**

1. Disconnect battery cables from battery pack (Figure 1).

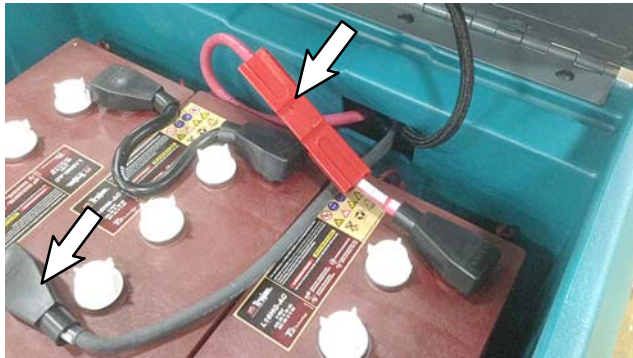


Fig. 1

2. Remove defective circuit board from machine (Figure 2).

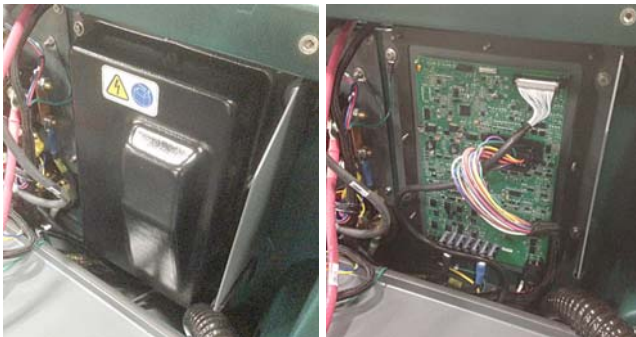


Fig. 2

3. Use the supplied static ground strap as instructed when handling new circuit board (Figure 3).



Fig. 3

### 9011014 Kit Contents



Ref	Part No.	Description	Qty.
1	-	Circuit Board, Logic	1
2	1016816	Pad, Thermal, Heat Sink	1
3	27964	Strap, Ground, Static	1

4. Using a small amount of instant adhesive, adhere the thermal heat sink pad to the back side of the new circuit board (Figure 4).

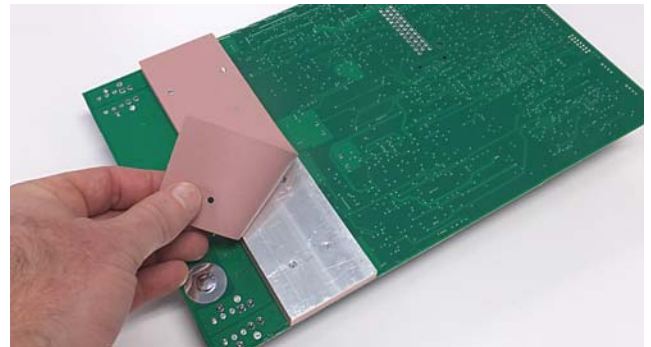


Fig. 4

5. Carefully install new circuit board, reconnect wire connections and replace covers (Figure 5).

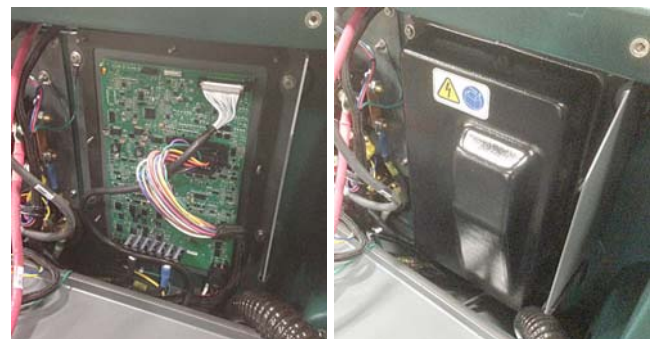


Fig. 5

6. Reconnect battery cables to battery pack.
7. **PROGRAM NEW CIRCUIT BOARD** as described on page 2.

**PROGRAM NEW CIRCUIT BOARD**

The new circuit board is factory programmed for a 27 in / 686 mm disk head model, with passive dust collection and wet/lead acid flooded batteries.

To reprogram the new circuit board, follow the below instructions:

**Disk Head Selection:**

1. Press and hold the down pressure decrease (-) button and the propel decrease (turtle) button while turning the key to the ON position. Release the buttons when a down pressure LED turns on (Figure 6).

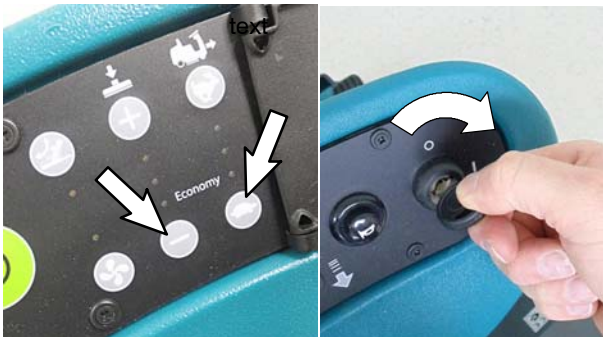
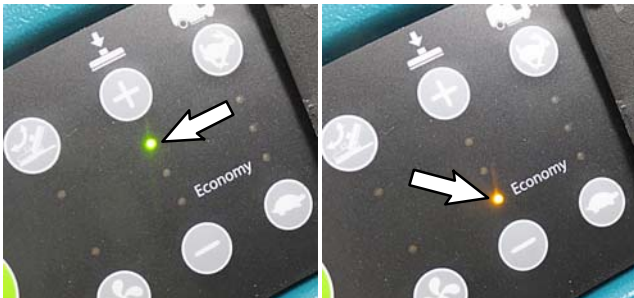


Fig. 6

2. The high down pressure LED indicates a 27 in / 686 mm disk head. The low down pressure LED indicates a 24 in / 610mm disk head. Press the (-) button to select the 24 in/610mm head. Press the (+) button to select the 27 in/686mm head (Figure 7). Turn key off to save selection.



27 in / 686 mm Disk Head      24 in / 610 mm Disk Head

Fig. 7

**Battery Selection:**

1. Press and hold the propel increase (rabbit) button while turning the key to the ON position. Release the button when one battery discharge indicator LED turns on. (Figure 8)



Fig. 8

2. The battery discharge indicator LEDs indicates battery selection. (Figure 9). Press the propel decrease (turtle) button to advance to other battery type. Turn key off to save selection.

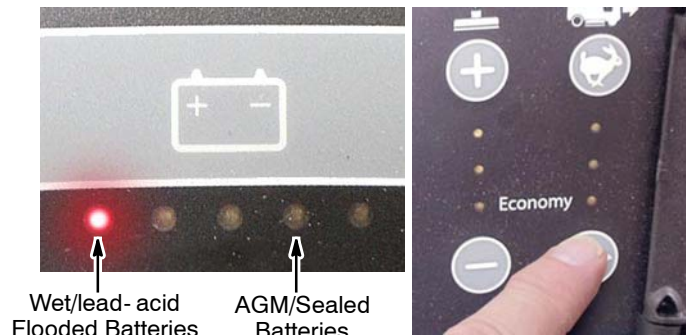


Fig. 9

*NOTE: The battery selection effects the operation of the BDI (battery discharge indicator).*

**Dust Collection Selection:**

Active Dust Collection: Uses on-board vacuum motor  
 Passive Dust Collection: Uses centrifugal force from pad

1. Press and hold the vacuum button while turning the key to the ON position (Figure 10). Release button when the vacuum LED flashes briefly.



Fig. 10

2. Press the vacuum button to toggle ON and OFF. A lit LED indicates Active Dust Collection is enabled (Figure 11). Turn key off to save selection.

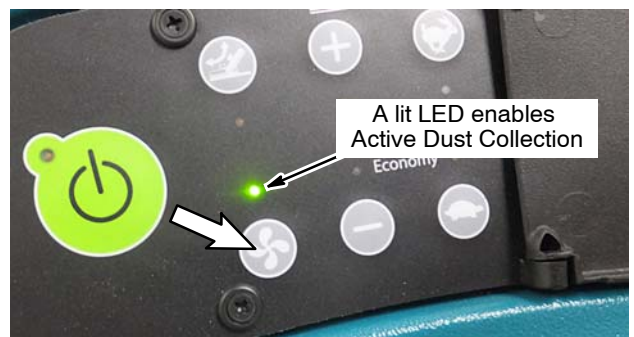


Fig. 11